

\$1,399,000 - 2238 S 1950 E, St George

MLS® #21-226131

\$1,399,000

5 Bedroom, 5.50 Bathroom, 5,507 sqft
Residential on 2.00 Acres

SKYLINE ESTATES, St George, UT

Almost TWO ACRES of secluded, private park-like setting nestled against red rocks on the South face of Stone Cliff, this incredibly gorgeous estate provides a multitude of living and lifestyle needs you've not yet found until now. Full size PRIVATE in-ground SWIMMING POOL & spa, boulder waterfall & entertainment room suitable for large gatherings. BONUS: Above garage apartment has living rm, kitchen, bedroom, bath and laundry services. 47' DEEP RV Garage + exercise rm., storage galore, and a traditional floorplan that compliments every sense of living

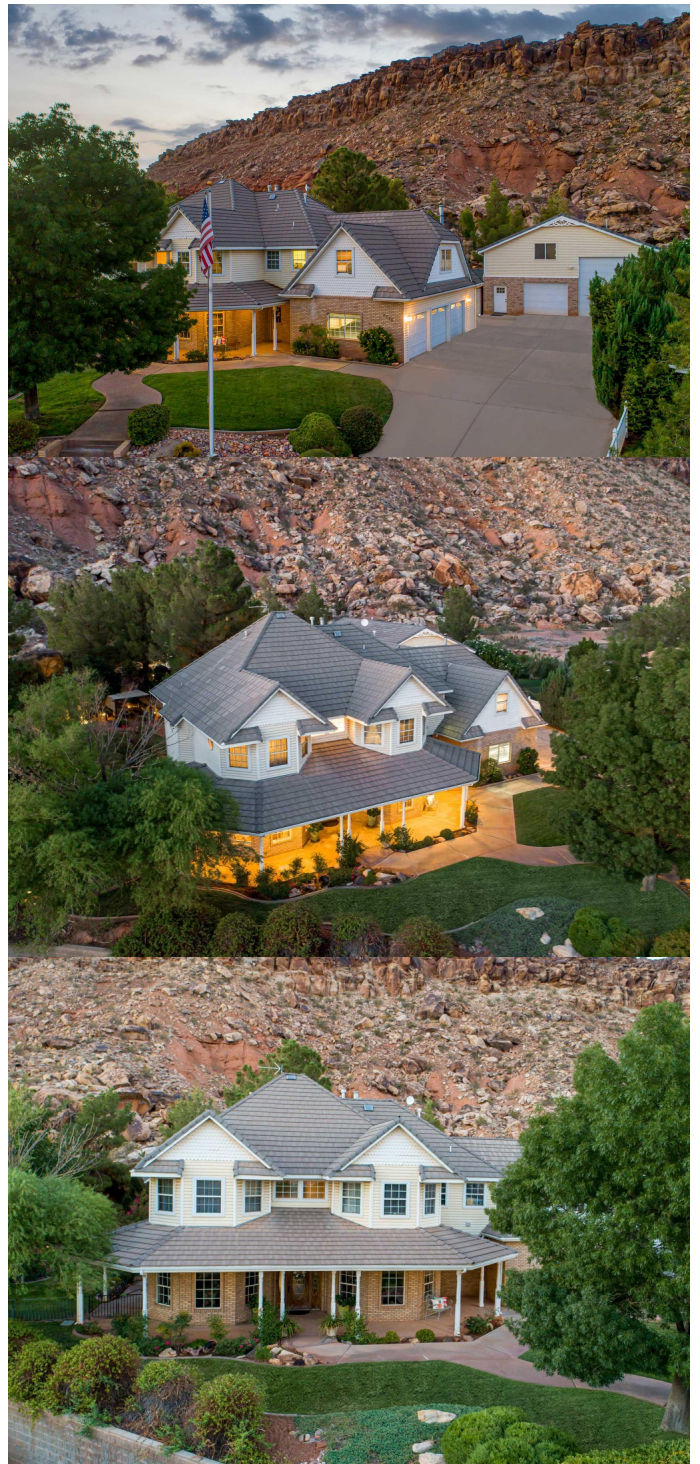
Built in 1993

Essential Information

MLS® #	21-226131
Price	\$1,399,000
Bedrooms	5
Bathrooms	5.50
Square Footage	5,507
Acres	2.00
Year Built	1993
Type	Residential
Sub-Type	Single Family
Status	Active

Community Information

Address 2238 S 1950 E



Area	Greater St. George
Subdivision	SKYLINE ESTATES
City	St George
County	Washington
State	UT
Zip Code	84790

Amenities

Utilities	Culinary, City, Electricity, Natural Gas, Sewer, Dixie REA
Features	Apartment, Bar, Dry, Bar, Wet, Bath, Sep Tub/Shwr, Ceiling Fan(s), Deck, Covered, Dishwasher, Disposal, Fenced, Partial, Fireplace, Gas, Jetted Tub, Landscaped, Full, Mother-in-Law Apt, Outdoor Lighting, Oven/Range, Built-in, Patio, Covered, Plant Shelves, Sidewalk, Sprinkler, Auto, Sprinkler, Full, Storage Shed(s), Walk-in Closet(s), Water Softner, Owned, Window Coverings, Window, Double Pane, Wired for Cable, Wood Burning Stove, Workshop, Cul-De-Sac, Curb & Gutter, Paved Road, Terrain, Grad Slope, View, Mountain
Parking	RV Garage, Attached, Detached
# of Garages	6
Garages	Both
Has Pool	Yes
Pool	In-Ground, Concrete/Gunite, Heated, With Spa, Private

Interior

Heating	Natural Gas
Cooling	Central Air
# of Stories	2

Exterior

Exterior	Brick, Vinyl Siding
Roof	Tile
Construction	Built & Standing
Foundation	Slab on Grade

School Information

Elementary	1LRQXRL5OPQN
Middle	1LRQXRWS2V4D
High	1LRQXRWTU6DL

Additional Information

Zoning	Residential
HOA Fees	0.00
HOA Fees Freq.	N/A

Listing Details

Listing Office BHHS UTAH PROPERTIES SG

Data is deemed reliable but is not guaranteed accurate by the Washington County Board of REALTORS®. Privacy Policy
Terms of Use

[Privacy Policy](#)

[Terms of Use](#)